

FX FRACTAL

System Manual

Risk warning

Before you begin trading on Real account please carefully consider your investment goals, risk and experience you have. It should be noted that Forex is a leverage based market. It should be remembered that leverage can work both in your advantage and disadvantage as well. Therefore there is high risk of losing a part or all of your financial input placed on your account and because of that you should remember to trade with the amount of money which you can lose without taking any influential financial damage.

Disclaimer

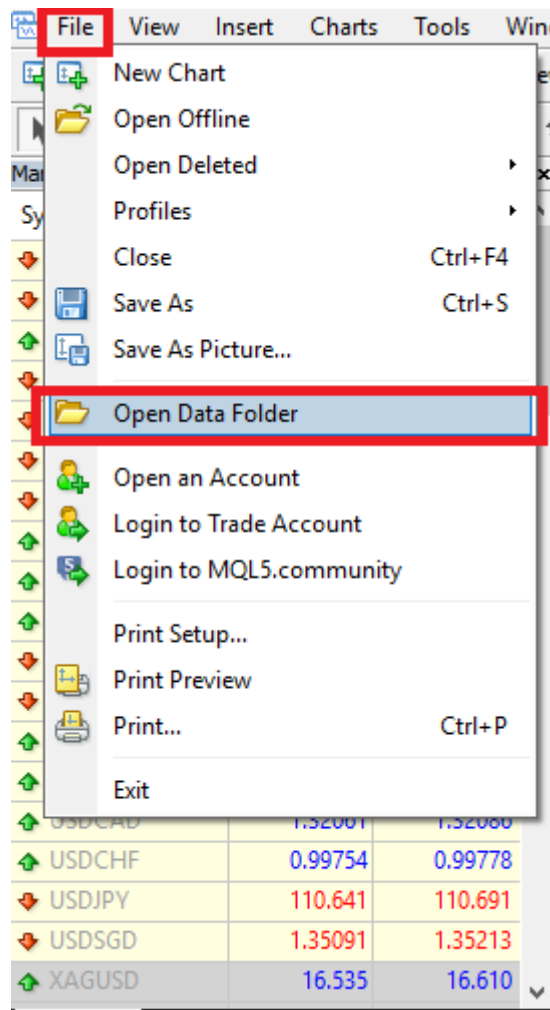
Signals generated by the system are not investment recommendations. All materials included on the website, as well as all system components (indicators, instruction manual) are for educational purposes only. Creators of the system will not take any responsibility for any profit or loss/damage caused by using the system.

Copyright © 2025 www.fxfractal.net All rights reserved.

Unless otherwise indicated, all materials on these pages are copyrighted. All rights reserved. No part of these pages, either text or image may be used for any purpose other than personal use. Therefore, reproduction, modification, in any form or by any means, electronic, or otherwise, for reasons other than personal use, is strictly prohibited without prior written permission.

Installation proces.

- Open your MT4
- Click 'File/Open Data Folder' from the top tab.



- Copy indicator files to the 'MQL4>Indicators' folder.

Experts	08.05.2018 16:02
Files	08.05.2018 16:01
Images	08.05.2018 16:01
Include	08.05.2018 16:01
Indicators	15.06.2018 22:29
Libraries	08.05.2018 16:02
Logs	16.06.2018 09:40
Presets	08.05.2018 16:01
Projects	08.05.2018 16:01
Scripts	08.05.2018 16:02

- Copy templates files to the 'Templates' folder.

config	15.06.2018 14:09
history	08.05.2018 16:03
logs	16.06.2018 09:40
MQL4	08.05.2018 16:01
profiles	13.06.2018 10:20
templates	15.06.2018 22:52
tester	13.06.2018 10:44
origin	08.05.2018 16:01

- Restart your MT4

1. Entry Indicator.

FX Fractal provides very easy to read signals.

RED Arrow = SELL SIGNAL

GREEN Arrow = BUY SIGNAL

We provide 3 x different modes (templates) that fits the best: scalping/daytrading/swingtrading.



2. MTF Module.

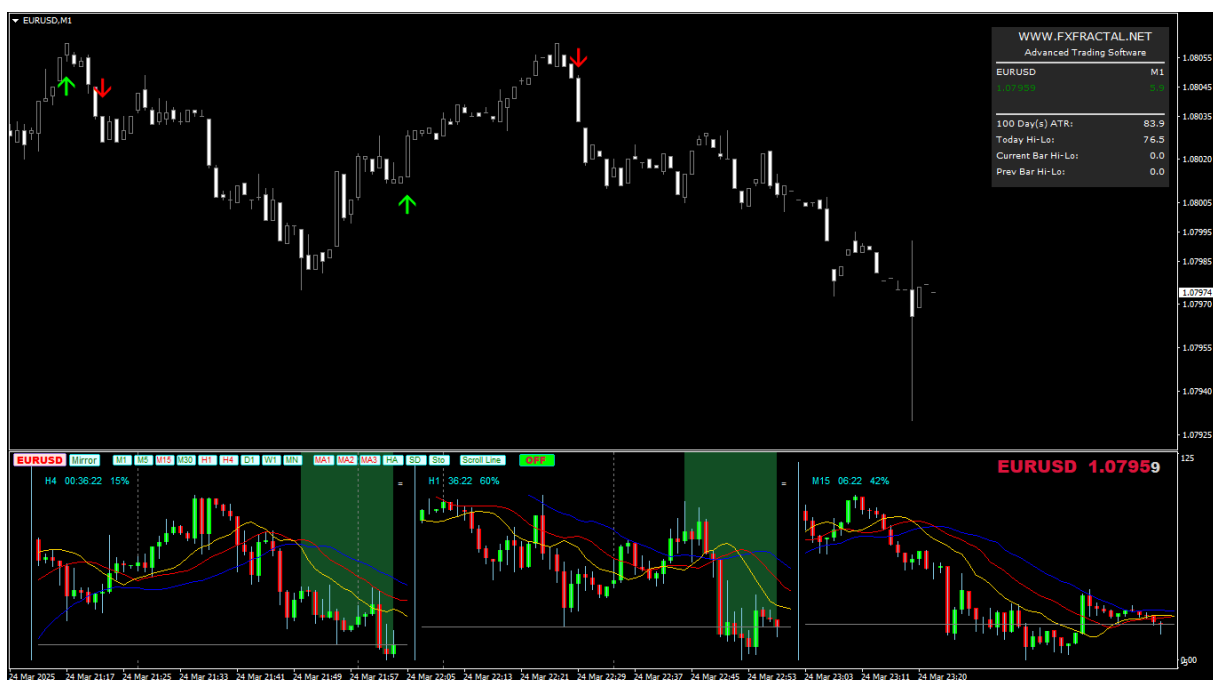
Standard bundle contains also great confirmation tool called 'Fractal MTF'. After picking your trading template (scalping/daytrading/swing trading) your chart will look like this:



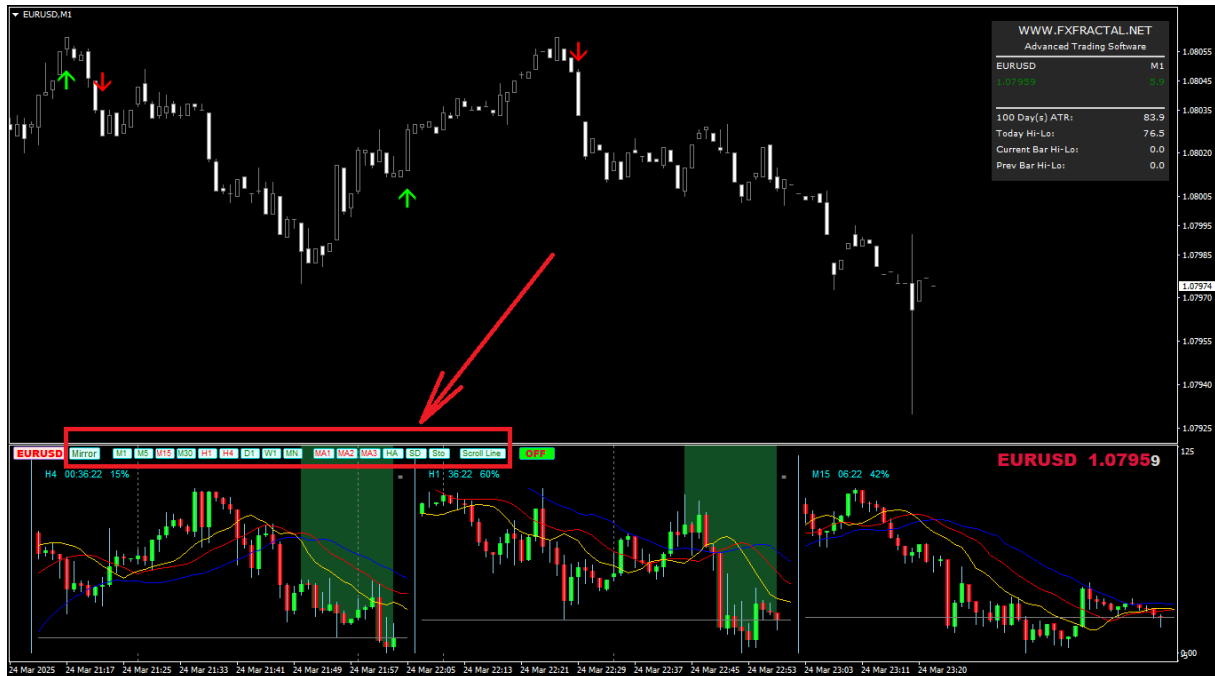
Now you can add MTF module to your chart. . You can simply drag it from 'Navigator' tab and activate with 'ON' button.



Now you are ready for trading:



3. MTF Module Features.



MTF dashboard provides many usefull features:

Mirror – show the charts upside down.

M1-M5-M15-M30-H1-H4-D1-W1-MN – shows the tracked timeframes. We recommend to use 3-4 on signle chart to easily visualization of the whole market view.

Recommended timeframes to use for filtering:

- Scalping: M15/M30/H1
- Daytrading: M30/H4/D1
- SwingTrading: H1/D1/W1

MA1/MA2/MA3 – allows to show up to three MA's (recommended to leave it as is).

HA – Heiken Ashi type of candles

SD – enables supply and demand levels

STO – enables stochastics oscillator

SCROLL LINE – allows to go backwards with the dashboard charts with one horizontal line (movable by mouse).

If you need any assistance let us know!

support@fxfractal.net